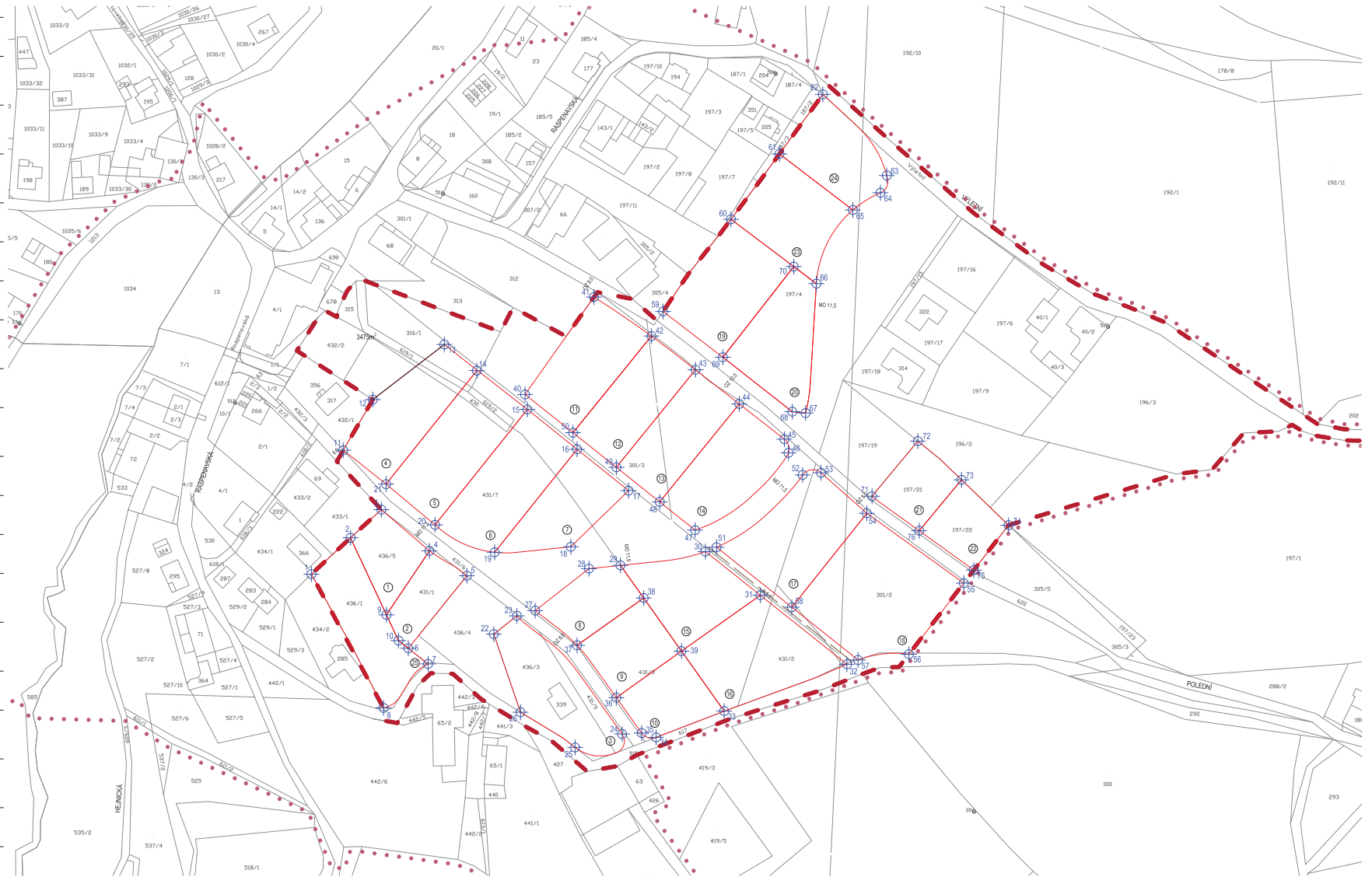


Č. POZEMKU	PLOCHA POZEMKU	VYTYČOVACÍ BODY POZEMKU	STAVAJÍCÍ MAJETKOPRÁVNÍ VZTAHY
1	975	1: x: -888566.03 y: -970486.21 2: x: -888551.04 y: -970452.49 4: x: -888527.84 y: -970472.56 5: x: -888548.53 y: -970503.70	LV 593
2	652	4: x: -888527.84 y: -970472.56 5: x: -888509.41 y: -970486.99 6: x: -888537.02 y: -970519.99 10: x: -888542.70 y: -970516.20 9: x: -888548.53 y: -970503.70	LV 522
3	2108	22: x: -888496.35 y: -970513.09 23: x: -888485.08 y: -970504.17 24: x: -888433.07 y: -970561.71 25: x: -888456.77 y: -970568.25 26: x: -888483.33 y: -970551.11	LV 220, LV 46
4	1887	11: x: -888569.61 y: -970423.58 12: x: -888555.18 y: -970398.90 13: x: -888520.41 y: -970372.11 14: x: -888504.42 y: -970384.59 21: x: -888548.75 y: -970440.06	LV 136, LV 342
5	2215	14: x: -888504.42 y: -970384.59 15: x: -888479.99 y: -970423.69 20: x: -888524.91 y: -970458.88 21: x: -888548.75 y: -970440.06	LV 136, LV 342, LV 1000Z, LV 660
6	2166	13: x: -888479.99 y: -970403.69 16: x: -888455.80 y: -970423.09 17: x: -888465.91 y: -970473.26 20: x: -888524.91 y: -970458.88	LV 136, LV 660
7	1517	10: x: -888455.80 y: -970423.09 17: x: -888430.75 y: -970443.22 18: x: -888458.82 y: -970470.96 19: x: -888465.91 y: -970473.26	LV 136, LV 660
8	1089	27: x: -888476.17 y: -970501.61 28: x: -888440.99 y: -970481.21 29: x: -888434.68 y: -970474.63 30: x: -888423.40 y: -970465.49 31: x: -888455.82 y: -970516.55	LV 136
9	1242	37: x: -888455.82 y: -970516.55 38: x: -888423.40 y: -970495.49 39: x: -888404.95 y: -970521.33 39: x: -888436.68 y: -970544.00	LV 103
10	1197	39: x: -888404.95 y: -970521.33 33: x: -888384.23 y: -970550.61 34: x: -888417.33 y: -970563.36 35: x: -888424.37 y: -970561.25	LV 103
11	1888	40: x: -888481.11 y: -970396.40 41: x: -888447.58 y: -970348.99 42: x: -888419.61 y: -970387.97 52: x: -888457.78 y: -970415.04	LV 660
12	1602	42: x: -888419.61 y: -970387.97 43: x: -888398.16 y: -970384.39 48: x: -888436.68 y: -970431.88	LV 660
13	1659	48: x: -888436.68 y: -970431.88 43: x: -888398.16 y: -970384.39 44: x: -888376.89 y: -970401.01 48: x: -888415.46 y: -970446.59	LV 660
14	1102	48: x: -888415.46 y: -970446.59 44: x: -888376.89 y: -970401.01 45: x: -888354.91 y: -970416.18 46: x: -888352.92 y: -970424.83 47: x: -888398.35 y: -970462.47	LV 660
15	1689	29: x: -888434.68 y: -970479.63 30: x: -888393.80 y: -970472.99 31: x: -888396.61 y: -970494.17 39: x: -888404.95 y: -970521.33 38: x: -888423.40 y: -970495.49	LV 660
16	2260	31: x: -888386.61 y: -970494.17 32: x: -888324.49 y: -970527.74 33: x: -888384.23 y: -970550.61 39: x: -888404.95 y: -970521.33	LV 660, LV 415
17	2281	51: x: -888387.83 y: -970470.78 52: x: -888346.00 y: -970435.59 53: x: -888337.07 y: -970434.54 54: x: -888314.80 y: -970454.25 58: x: -888351.28 y: -970500.00	LV 660, LV 591, LV 415
18	3327	58: x: -888351.28 y: -970500.00 54: x: -888314.80 y: -970454.25 59: x: -888287.61 y: -970486.26 56: x: -888294.30 y: -970522.86 57: x: -888319.05 y: -970525.68	LV 591, LV 415
19	2118	59: x: -888413.96 y: -970356.01 60: x: -888380.90 y: -970311.13 70: x: -888350.35 y: -970334.14 69: x: -888384.85 y: -970378.30	LV 100
20	1638	69: x: -888384.85 y: -970378.30 70: x: -888350.35 y: -970334.14 60: x: -888339.33 y: -970342.44 67: x: -888344.61 y: -970405.45 68: x: -888351.07 y: -970404.76	LV 100
21	964	71: x: -888312.27 y: -970445.96 72: x: -888289.97 y: -970419.12 73: x: -888288.71 y: -970437.97 76: x: -888289.30 y: -970462.77	LV 644
22	964	76: x: -888289.30 y: -970462.77 73: x: -888288.71 y: -970437.97 74: x: -888245.94 y: -970460.07 75: x: -888262.72 y: -970481.92	LV 644
23	1864	60: x: -888380.90 y: -970311.13 61: x: -888357.30 y: -970279.30 66: x: -888321.67 y: -970306.58 69: x: -888339.33 y: -970342.44 70: x: -888350.35 y: -970334.14	LV 100
24	1568	61: x: -888357.30 y: -970279.30 62: x: -888336.21 y: -970290.31 63: x: -888306.06 y: -970289.63 64: x: -888306.18 y: -970298.21 65: x: -888321.67 y: -970306.58	LV 100
25	3309	1: x: -888695.69 y: -970483.92 2: x: -888566.03 y: -970486.21 3: x: -888548.53 y: -970503.70 10: x: -888542.70 y: -970516.20 8: x: -888537.02 y: -970519.99 7: x: -888528.30 y: -970527.61 6: x: -888505.00 y: -970549.02	LV 149



- LEGENDA**
- STAV
 - POZEMEK DLE N.Ú. Č.P.
 - NÁVRH
 - HRANICE ŘEŠENÉHO ÚZEMÍ
 - - - HRANICE ŠIRŠÍHO ÚZEMÍ
 - NÁVRH PARCELNÍHO USPOŘÁDÁNÍ
 - POZEMEK
 - ČÍSLO POZEMKU
 - ⊗ VYTYČOVACÍ BODY POZEMKŮ V.Č. Č.Ú.Č.Ú.Ú.

03 ÚZEMNÍ STUDIE RADČICE - U LÍPY NOVE PARCELNÍ USPOŘÁDÁNÍ M:1000

DATUM: UNOR 2017
 FAZE: ZPRACOVÁNÍ KONCEPTU PRO KONSULTACE
 OBJEDNATEL: STATUTÁRNÍ MĚSTO LIBEREC
 ZPRACOVATEL: ATELIER T+P+L+K s.r.o.
 Ing. Jiří Hlavinka, Ph.D.
 Ing. Petra Hlavinková
 Ing. Miroslava Škorpová
 Roman Soukup
 Ing. Štěpán Holý
 Ing. Vladimír Jáhla

